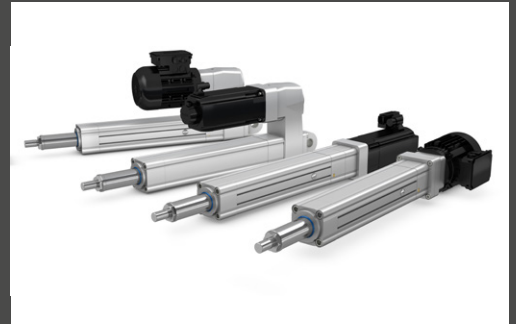


QUICK START GUIDE CASM-100



This QUICK START GUIDE does not replace the operating manuals of the included products.

For general information and safety instructions please refer to installation, operation and maintenance manuals available at <https://www.ewellix.com/en/products/high-performance-actuators/casm-100>

Only qualified personnel with professional training, knowledge, experience and profound knowledge of applicable regulations shall carry out installation, operation and maintenance work to be able to recognize and prevent possible danger.

Technical datasheet

CASM-100 and e-MOVEKIT
PUB NUM IL-07016-EN



Operating manual CASM-100
PUB NUM TC-08001-EN



Operating manual e-MOVEKIT
PUB NUM TC-08056-EN



ewellix.com

© Ewellix

All contents of this publication are the property of Ewellix, and may not be reproduced or given to third parties (even extracts) without permission. Although great care has been taken in the production of this catalog, Ewellix does not take any responsibility for damage or other loss resulting from omissions or typographical errors. The photo may differ slightly in appearance from the actual product. Due to continuous improvements being made in our products, the product's appearance and specifications are subject to change without notice.

PUB NUM TC-08053-EN-November 2022

Contact Us For More Information.

SLS Bearings (S) Pte Ltd

www.slsbearings.com

Visit SLS e-shop : shop.slsbearings.com/sg

Phone : (65) 6515 0515

Email : contact.us@slsbearings.com.sg